

# QUICK GUIDE

## ASSEMBLING THE PUMPSET

If you need help with your Ardo product, contact customer service at 844-411-ARDO (2736) or [support@ardo-usa.com](mailto:support@ardo-usa.com).

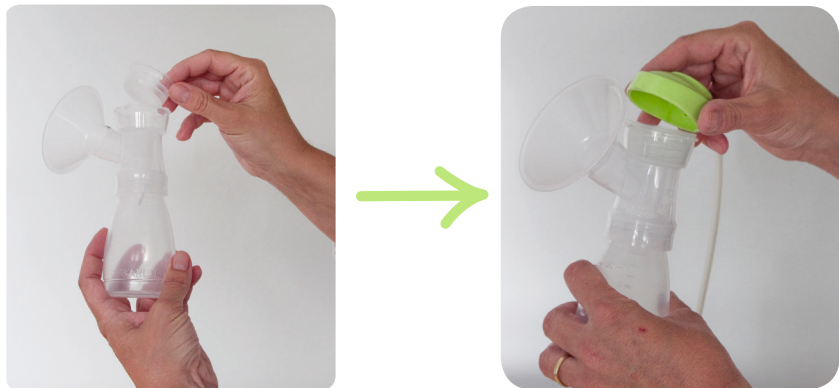
### 1<sup>st</sup> Step

Attach the white valve by holding it on its side and insert it into the breast shell. Take the milk bottle and screw it to the breast shell.



### 2<sup>nd</sup> Step

Place the flexible membrane pot, smooth side out, in the breast shell and press down firmly. Press the green top on the breast shell.



### 3<sup>rd</sup> Step

Line up the the central mark on the green top with the mark on the breast shell, and gently turn the top to the right. The Pumpset is ready to go.



Videos showing the Ardo products can be found on YouTube, Facebook and on [www.ardo-usa.com](http://www.ardo-usa.com).